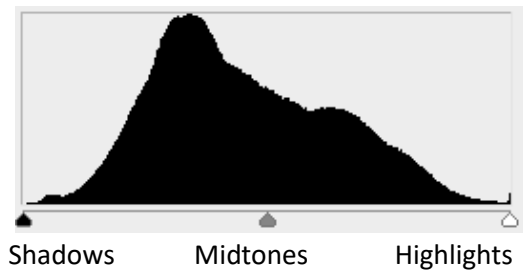


Adjusting Levels

After opening your image in Photoshop, go to Image, Adjust, Levels

Here you will see the image histogram. Ideally the histogram should be a normal curve to the one shown on the right, extending over the full tonal range.

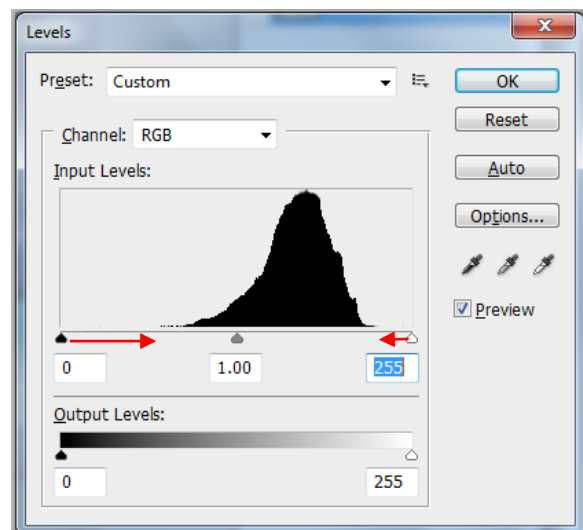


Often, your image may only extend over part of the tonal range, such as the image shown below.



Low contrast image, narrow tonal range.

Narrow histograms reflect less contrast and may appear flat or dull.



- To correct this, move the left and right sliders inwards to meet the lower and upper tonal range shown on the histogram.
- Move the centre slider to adjust midtones (neutral grey).
- While adjusting levels you may turn the Preview on and off to see the difference you have made to your image.

Your resulting image will look like this, above.



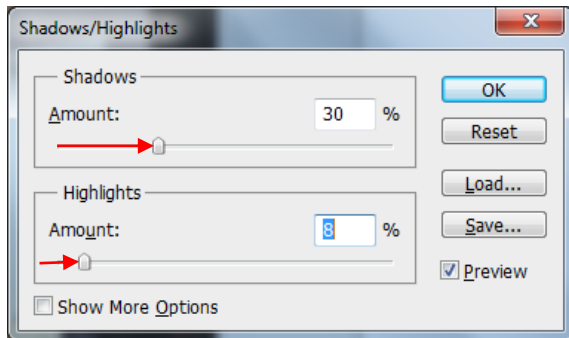
Straightening horizons

- In Photoshop select the ruler tool (in with the eye dropper)
- Click and drag a line along the crooked horizon, then
 - a) If you want your image straightened and cropped, press the straighten button on the toolbar
 - b) If you just want your image straightened, go to Image, Image Rotation, Arbitrary, OK

Shadows and Highlights

The camera has trouble adjusting to high contrast scenes such as the one to the right. This often results in areas underexposed or overexposed.

After opening your image in Photoshop, go to Image, Adjust, Shadows / Highlights...



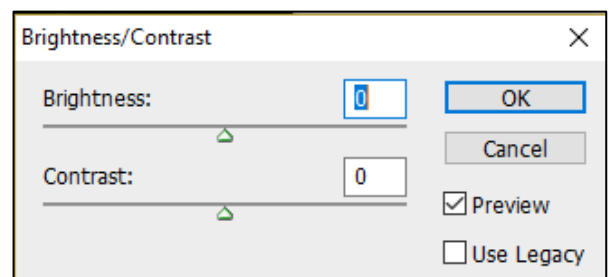
Resulting image – shadows lightened, highlighted areas darkened

Move the sliders to adjust the amount you want to overexpose the shadow areas and the amount you want to underexpose the highlighted areas.

You may turn the Preview on and off to see the difference you have made to your image.

Brightness, Contrast

- Brightness and Contrast can be adjusted to give your image more appeal.
- Go to Image, Adjust, Brightness / Contrast. Move the sliders to increase or decrease the brightness and contrast.
- You may turn the Preview on and off to see the difference you have made to your image.



NOTE:

The methods described above are destructive – they alter your image.

For non-destructive modifications, we use Adjustment Layers which we can cover in another handout.

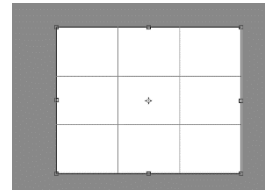
Cropping



- After opening your image in Photoshop, select the crop tool.
- You may set the width, height and resolution if required, then click and drag a rectangle in the image.

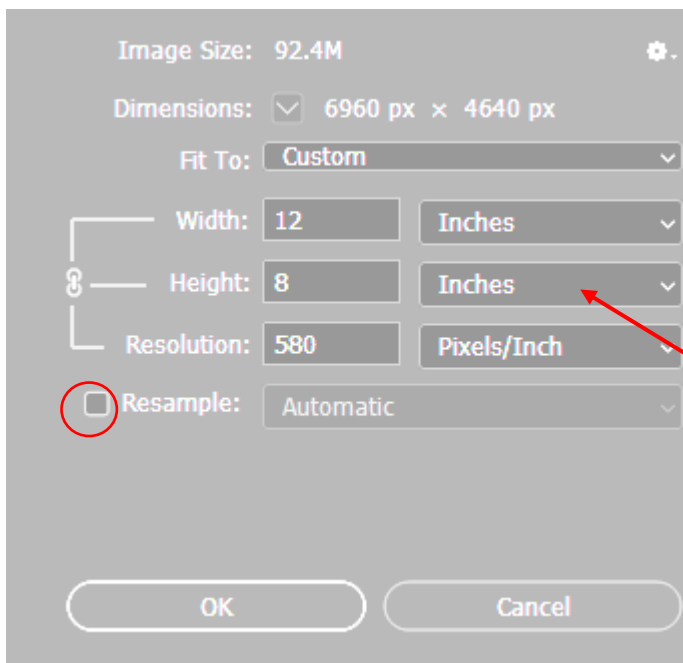
*Width and height may be in pixels, mm or cm.
The arrows reverse the dimensions*

Width: ⇄ Height: Resolution: pixels/inch ▼



- Resize or move the image around till you have the size you require then press Enter.
- If you want a square, type in 1 for width and 1 for height. Leave resolution blank.
- If you need an image 1920 x 1200 pixels, type these for the width and height. Type your resolution or leave blank. If left blank, the resolution will remain the same.

Resizing Images to print 12" x 8" (3:2 ratio images)



Open your image in Photoshop and go to Image, Image size.

You should always keep your original image and save another copy with a different name if you modify it, especially when resizing.

- Take off resample for maximum file size. Leave on if you want to reduce your file.
- Image size may be changed here to cm or inches
- As a guide, if printing on glossy paper change pixel resolution to 300 ppi or more
- Save as highest quality

Resizing Images to print 12" x 8" (other image ratios)

- If your camera takes images that are not in a 3:2 ratio, then resize by setting the crop to 12" x 8" at 300 ppi or just leave the resolution blank.
- Crop as explained in the notes above

Width: ⇄ Height: Resolution: pixels/inch ▼

Resizing for Digital Competitions 1920px x 1200px maximum

For competitions we need maximum width 1920 x height 1200 at 72 pixels per inch

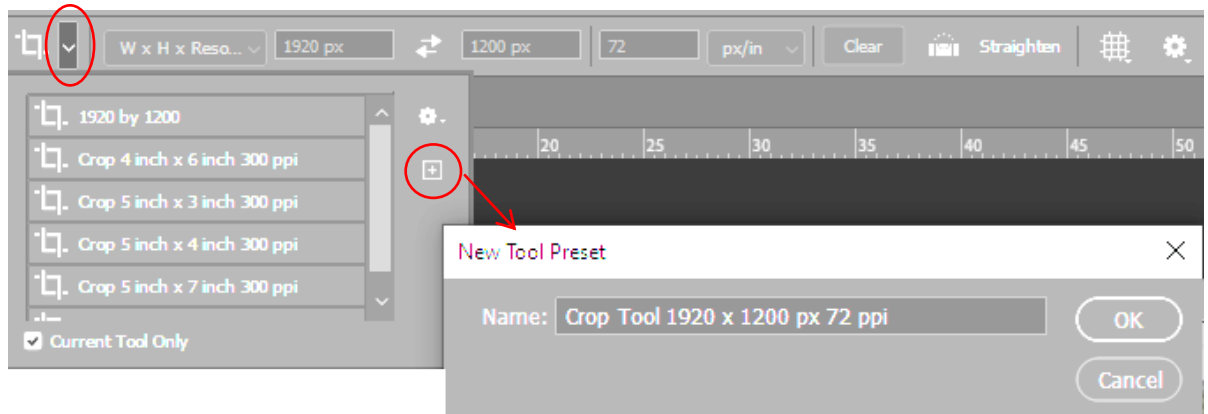
- Firstly select the crop tool and type the required dimensions as shown



- A rectangle will be shown on your image. You may resize and move this rectangle until you have the best position
- Press enter to crop and then save with a NEW name. Eg JJones Oil and Water
NOTE: Make sure you don't delete your original image.

May I suggest you save this as a crop preset.

- Firstly select the crop tool and type the required dimensions as shown above
- Now click the arrow next to the crop tool to open the preset list
- Click on the icon for creating a new tool preset



- Type your new preset name *Crop Tool 1920 x 1200 px 72ppi*
- Now each time you want to resize for camera club competitions, you can select the preset.

Portrait and Panorama Digital images

Your digital image must be a **maximum** of 1920 x 1200 pixels. If your image is portrait or panorama, change the crop settings as shown then click and drag and press enter



Shortcuts

Ctrl +	Zoom in
Ctrl -	Zoom out
CTRL J	Copy layer
]	Increase brush size
[Decrease brush size

Ctrl Alt Z	Undo
Ctrl D	Deselect
Ctrl C	Copy
Ctrl V	Paste